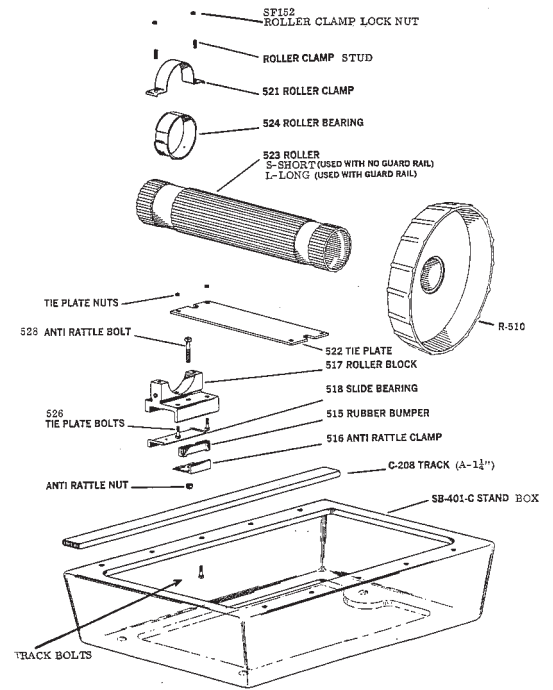


DIVE BOARD PARTS

Durafirm Fulcrum Assembly

Item No	Description	Price
16 12 08	SF152 Roller clamp lock nut c/w stud	\$5.55
16 12 09	521 Roller clamp	\$19.95
16 12 10	524 Roller bearing	\$16.65
16 12 11	510S Roller S-short with foot wheel	\$529.50
16 12 12	510L Roller L-long with foot wheel	\$572.80
16 12 13	528 Anti rattle bolt c/w nut	\$7.80
16 12 14	522 Tie plate	\$84.40
16 12 15	517 Roller block assembly	\$167.10
16 12 16	518 Slide bearing	\$11.65
16 12 17	526 Tie plate bolts c/w nuts	\$5.55
16 12 18	515 Rubber bumper	\$9.99
16 12 19	516 Anti rattle clamp	\$16.10
16 12 20	C208 Track (A-1 1/4")	\$119.95

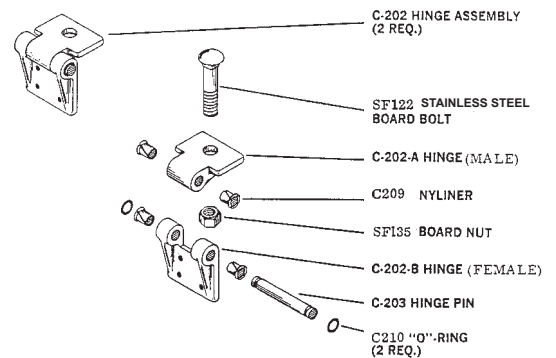


Miscellaneous Parts

16 12 21	MP 112 Vinyl channel kit 30" 8 channels w/glue kit	\$194.25
16 12 22	C207 Rail clamp	\$10.55
16 12 23	C207 Rail clamp bolt specify length 1/2, 5/8, 3/4 or 7/8	\$1.65

Durafirm Hinge Assembly

Item No	Description	Price
16 12 01	SF122 - 5/8" x 3 1/2" Stainless Steel Bolt c/w nut / pr	\$70.95
16 12 02	C202A Hinge (Male)	\$71.10
16 12 03	C209 Nyliner	\$5.00
16 12 05	C202B Hinge (Female)	\$81.10
16 12 06	C203 Hinge Pin	\$20.55
16 12 07	C210 O-ring	\$4.95
16 12 25	C202 Hinge assembly	\$170.40
16 12 26	SF 106 Aluminium hinge mounting bolt	\$4.95



NOTE: All Durafirm stand parts are available (railings, fulcrum box, legs, ladder, steps, etc.) as replacement parts. If parts you require are not listed, please inquire.

Diving Board Resurface Kit

Made by Kelly Technical this kit is suitable for all aluminum boards. It is exactly enough material to coat top & edges of one Duraflex board; it is supplied with roller and complete instructions.

Available in white, blue or turquoise.

Item No	Description	Price
16 12 24	Diving board resurface kit - turquoise	\$103.95

