

**Custom lifts for special applications are available. Please inquire.**

**Aquanaid's Mark & Mark II are Discontinued! Parts only until 2020.**



**PARTS AVAILABLE**

**AQUANAIDS MARK II (OTTER):** 350# rating; suitable for in ground pools.

Item No	Description
17 030 70	Plastic Seat for Mark II
Other parts POR	



**PARTS AVAILABLE**

**AQUANAIDS MARK I LIFT:** 350# rating; well built, in ground & above deck level pools.

Model	Price
BS112	\$195.00

## ACCESS STEPS & LADDERS

### Therapy Ladder (Missoula ladder)

The sloping design makes pool access user friendly at a very good price. Rails are stainless steel 1.5' OD for easier gripping. Units are custom made for your pool. Anchor sockets and escutcheons sold separately. **FOB Factory.**

Item No	Description	Model	Price
17 03 10	Therapy Ladder 3 step	25013	\$1245.00
17 03 11	Therapy Ladder 4 step	25019	\$1325.00
17 03 12	Therapy Ladder 5 step	25025	\$1465.00
17 03 15	Compression Anchor	24093	\$140.65
17 03 16	Compression Anchor Wrench	24094	\$58.95

**This Therapy Ladder can be configured to work in deep water by being bent to return to the pool wall like a regular pool ladder.**



### Easy Ladder

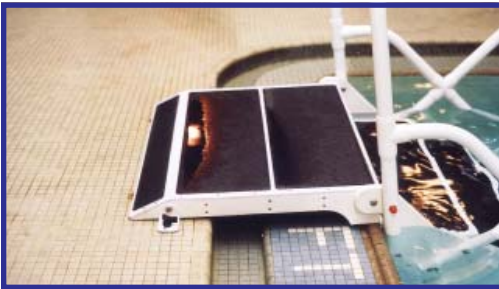
These Ladders are custom made fiberglass pool ladders, designed for use where temporary extra access is required. Construction is one piece, with integral sides and risers. The Deck adapter is bolted on. They are designed to sit on the pool bottom and deck, snugly, and no extra anchoring is provided. The steps are 31" wide, riser height is 9 3/4" and tread width is 12", and non-skid. The ladder comes with a detachable set of wheels to make moving easier. Both corner and end wall models can be made. Two colours are available, yellow or blue. Ladders are custom made to dimensions provided, and trimmed to fit depth, floor slope, and coping as required. Some assembly is required. Hand-rails are stainless steel. Normally 2 people are needed to lift the ladder out of the pool. Dimensions noted are from pool bottom to deck level. **FOB Factory**

Item No	Description	Price
17 06 01	Easy Ladder, up to 48" 5 step	\$2250.00
17 06 02	Easy Ladder, 48" up to 58" 6 step	\$2810.00
17 06 03	Easy Ladder, 59" up to 68" 7 step	\$3255.00



## Aqua Step HD - Pool Access Step

These are lightweight pool steps designed for use where temporary access is needed. Once lifted out of the pool one person can wheel it away on the integral wheels. Custom made to accommodate various pool depths, deck profiles, and bottom slopes, as per dimensions provided with order. The top steps come with brackets and fasteners to bolt the step to the deck, and can be customized. The treads are non-skid plastic, 10" deep and 30" wide, with ss braces for a 500 pound load. Handrails are plastic coated aluminum for strength and durability. The number of treads can be customized, but remember that riser height must be 10" or less. Treads are large and easy to climb but note that the handrails do not overhang over deck but stop at the end of the stairs, at the pool edge. The Aqua Step is shipped knocked down, some assembly is required. Sides are removable to make taking the stairs in and out easier, risers when installed are fixed. **FOB Factory**



Custom Top Step

Item No	Description	Pool Depth	Price
17 05 01	Pool Access Steps 4 tread	34" to 45"	\$2795.00
17 05 02	Pool Access Steps 5 tread	41" to 55"	\$3255.00
17 05 03	Pool Access Steps 6 tread	48" to 64"	\$3610.00
17 05 07	Pool Access Steps 7 tread	56" to 74"	\$3875.00
17 05 08	Set of 2 Replacement Wheels		\$122.50

### Options And Parts:

17 05 04	Custom Top Step	POR
17 05 05	Replacement Standard Top Platform	\$585.00
17 05 07	Replacement Step Plastic with SS brace 30" wide, replaces old style plastic or aluminium step	\$595.75

### Optional Sides and Risers when ordered with a step.

17 05 15	Sides and Risers for 4 step	\$449.00
17 05 16	Sides and Risers for 5 step	\$499.00
17 05 17	Sides and Risers for 6 step	\$545.00
17 05 18	Sides and Risers for 7 step	\$585.00

For Sides and Risers when ordered as an upgrade kit freight is Fob factory.

## Bozeman Therapy Steps

These are very solid stairs, securely anchored, but still easy to take out and roll away. The stainless steel rails are 1.5" OD by .120 wall, and held in compression anchors, (also ss) which are cemented into the deck, and grounded. The compression anchors tighten or loosen with a quarter turn, and the rails drop in or pull out. The treads are 12" deep and 31" wide, fiberglass T-bar, the same material as Duradeck Grating with non-skid finish, and ss Toe Guard. Four UHMW wheels and one UHMW bumper protect the pool bottom and wall. Rated at 400 pounds with a 1.5 safety factor. Poly netting is provided under the stairs and sides to avoid entrapment. These are made to order based on customers measurements to ensure proper fit. Risers may vary but be sure to order enough steps to keep this to 10" or less. Shipped knocked down, some assembly required. Two compression anchors and a wrench are needed, and sold separately. **FOB Factory**



Item No	Description	Model	Price
17 05 50	Bozeman 3 - Step	25101	\$3995.00
17 50 51	Bozeman 4 - Step	25201	\$4395.00
17 50 52	Bozeman 5 - Step	25301	\$4835.00
17 50 53	Compression Anchor (2 required)	24093	\$140.65
17 50 54	Anchor Wrench (1 required)	24094	\$58.95

**NOTE: Sides and risers are now required in British Columbia.**